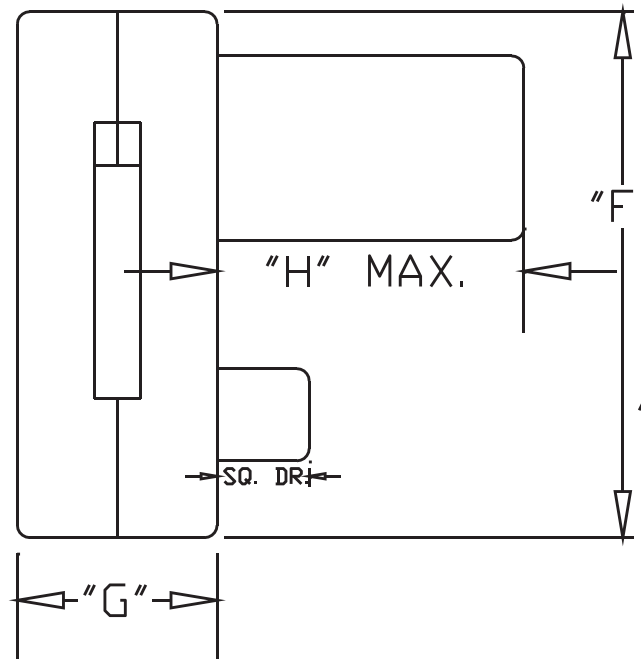


Model	A	B	C	D	E	F	G	H
V-2	1.00"	2.10"	1.16"	8.00"	6.88"	4.28"	1.63"	2.50"
V-4	1.33"	2.80"	1.55"	10.67"	9.17"	5.70"	2.17"	3.33"
V-8	1.66"	3.50"	1.94"	13.33"	11.46"	7.13"	2.71"	4.16"
V-16	2.00"	4.20"	2.33"	16.00"	13.75"	8.55"	3.26"	5.00"
V-32	2.66"	5.60"	3.10"	21.34"	18.34"	11.40"	4.34"	6.66"
V-64	3.33"	7.00"	3.88"	26.68"	22.93"	14.25"	5.43"	8.33"

Model	Square Drive	Maximum Torque @10k PSI
V-2	.75"	1,300 ft. lbs. / 1,762 Nm
V-4	1.00"	3,080 ft. lbs. / 4,175 Nm
V-8	1.50"	6,015 ft. lbs. / 8,155 Nm
V-16	1.50"	10,400 ft. lbs. / 14,100 Nm
V-32	2.50"	24,650 ft. lbs. / 33,420 Nm
V-64	2.50"	48,125 ft. lbs. / 65,250 Nm



For more information or for specific repair needs, Alltite's Customer Support Center has solutions for your immediate problems.